

BROOK TAVERNER

SINCE 1912



SOPHISTICATED
COLLECTION

CORPORATE CLOTHING 2023/24

**BROOK
TAVERNER**

SINCE 1912

SOPHISTICATED COLLECTION

PREMIUM

A best-seller for a reason. The Sophisticated Collection blends lightweight European fabric with superior technical attributes in the widest choice of fits and designs available. Providing the ultimate in style, it's little wonder that this remains Europe's premium tailoring collection, trusted by many of the world's leading brands.



SOPHISTICATED

BROOK TAVERNER

SINCE 1912

SOPHISTICATED / MEN'S

JACKETS

CASSINO Slim Fit Jacket	84
AVALINO Tailored Fit Jacket	85
IMOLA Classic Fit Jacket	85

TROUSERS

CASSINO Slim Fit Trousers	87
AVALINO Tailored Fit Trousers	86
IMOLA Classic Fit Trousers	87

WAISTCOAT

BUSSO Tailored Fit Waistcoat	88
------------------------------	----

SOPHISTICATED FLEXIBLE LOOKS

Options for wearability	89
-------------------------	----

SOPHISTICATED / WOMEN'S

JACKETS

ROSA Tailored Fit Jacket	90
NOVARA Tailored Fit Jacket	91
CALVI Slim Fit Jacket	92
OPERA Classic Fit Jacket	93

TROUSERS

VARESE Straight Leg Trousers	95
GENOA Tailored Leg Trousers	94
MIRANDA Parallel Leg Trousers	95
TORINO Slim Leg Trousers	94

WAISTCOAT, SKIRTS & DRESSES

SCAPOLI Tailored Fit Waistcoat	93
EMPOLI Skirt	96
NUMANA Skirt	96
MARINO Dress	97
TERAMO Dress	97

COLLECTION SUMMARY

COLOUR CHOICE & AFTERCARE

Sophisticated Collection & Fabric Information	98 - 101
---	----------



20 MIX & MATCH STYLES / SLIM, TAILORED & CLASSIC FITS / UP TO 6 COLOURS



54% Polyester
44% Wool
2% Lycra



High Level
of Stretch



Machine
Washable



Lightweight
Fabric



Durable -
Martindale Test
> 60,000 rubs



High Level
of Stain
Resistance



NANO PROTECTED
FABRICS®



PARTICULARLY SUITABLE FOR:



Management



Financial
& Banking



Travel



Hotels



Front of
house



Retail



Facilities
Management



Car
Dealerships



A. Navy

C. Charcoal

D. Black

F. Charcoal Pinstripe

G. Light Grey

H. Mid Blue

SOPHISTICATED

CASSINO JACKET

SLIM FIT
C. Charcoal

Sizes:

34" - 44" short
34" - 46" regular
34" - 44" long

Code & Colours:
5985 A, C, D, G, H

Centre back length at size
40R = 75cm



High Level of Stretch



Lightweight Fabric



High Level of Stain Resistance

Saddle stitch detail

Slim lapels

Slim fit

Ticket pocket

2 button

Side vents

AVALINO JACKET

TAILORED FIT

A. Navy

2 button, side vents.

Sizes:

36" - 48" short
34" - 56" regular
34" - 48" long

Code & Colours:
5647 A, C, D, F, G, H

Centre back length at size
40R = 77cm



SOPHISTICATED

IMOLA JACKET

CLASSIC FIT

D. Black

3 button, centre vent.

Sizes:

36" - 48" short
36" - 56" regular
38" - 48" long

Code & Colours:
5646 A, C, D

Centre back length at size
40R = 78cm



CASSINO - Slim Fit
5985 A, C, D, G, H



AVALINO - Tailored Fit
5647 A, C, D, F, G, H



IMOLA - Classic Fit
5646 A, C, D

UNIFORMS TAILORED FOR EVERY BODY

Slim, tailored & classic fit styles to deliver exceptional wearer comfort and confidence.

AVALINO

TAILORED FIT TROUSER



AVALINO TROUSER

TAILORED FIT

H. Mid Blue

Sizes:

24" - 52" waist in leg lengths
S-29.5", R-31.5", L-33" & 36" unfinished

Code & Colours:

8387 A, C, D, F, G, H

Waist size 46" available
in solid colours only.

Sizes 24" and 26" available
in colour A only.

Sizes 48" to 52" available
in colours G and H only.

Half hem width at waist size
34" = 21cm

2 side pockets

1 rear pocket

Flat front

Tailored fit

Lightweight fabric

Available in 3 leg lengths
and unfinished

High Level of Stretch

Lightweight Fabric

High Level of Stain Resistance

SLIM, TAILORED & CLASSIC FIT TROUSERS



CASSINO TROUSER

SLIM FIT

G. Light Grey

Flat front, 2 side pockets, 1 rear pocket.

Sizes:

28" - 40" waist in leg lengths
S-29.5", R-31.5", L-33" & 36" unfinished

Code & Colours:

8655 A, C, D, G, H

Half hem width at waist size

34" = 19cm



IMOLA TROUSER

CLASSIC FIT

C. Charcoal

Single pleat, 2 side pockets, 1 rear pocket.

Sizes:

28" - 52" waist in leg lengths
S-29.5", R-31.5", L-33" & 36" unfinished

Code & Colours:

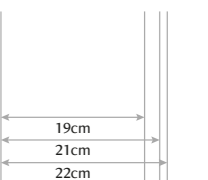
8314 A, C, D

Waist sizes 50-52 available in solid colours only.

Half hem width at waist size

34" = 22cm

3 Trousers hem widths



SOPHISTICATED



- High Level of Stretch
- Lightweight Fabric
- High Level of Stain Resistance

BUSSO WAISTCOAT
TAILORED FIT
 A. Navy

Cloth backed, 2 welt pockets, 5 button front.

Sizes:
 34" - 56" regular

Code & Colours:
 1074 A, C, D, F, G, H

Centre back length at size
 40R = 62cm



BUSSO - Tailored Fit
 1074 A, C, D, F, G, H

SOPHISTICATED

FIND YOUR SOPHISTICATED STYLE

Designed to encourage individuality, our versatile range of corporate fashion delivers the freedom of choice when creating the perfect uniform.

Our tailored lines look sharp worn as full suits and can be paired with styles from our Casuals & Separates for a more relaxed feel. Shirts & Blouses add a further layer of flexibility with a host of complementary options that can take a uniform in any direction.

With endless amounts of mix & match opportunities, the choice really is yours!



CREATE UNIFORM LOOKS FOR A VARIETY OF MARKET SECTORS INCLUDING:

- Management
- Financial & Banking
- Travel
- Hotels
- Front of house
- Retail
- Facilities Management
- Car Dealerships

SOPHISTICATED

ROSA
TAILORED FIT JACKET





High Level of Stretch | Lightweight Fabric | High Level of Stain Resistance



ROSA JACKET
TAILORED FIT
C. Charcoal

Sizes:
 6 - 16 short
 6 - 24 regular
 6 - 18 long
 Code & Colours:
 2353 A, C, D, H
 Centre back length at size
 12R = 50cm

Collarless styling

Lightweight fabric

High level of stretch

Tailored fit

2 internal jet pockets

Curved vents

SOPHISTICATED, THROUGH AND THROUGH



NOVARA JACKET
TAILORED FIT
H. Mid Blue

2 button, contrast detailing, centre vent.
 Sizes:
 6 - 18 short
 4 - 24 regular
 8 - 18 long
 Code & Colours:
 2222 A, C, D, F, G, H
 Centre back length at size
 12R = 63cm



ROSA - Tailored Fit
2353 A, C, D, H

NOVARA - Tailored Fit
2222 A, C, D, F, G, H

SOPHISTICATED

CALVI JACKET

SLIM FIT
D. Black

Sizes:
6 - 16 short
4 - 24 regular
6 - 18 long

Code & Colours:
2252 A, C, D, G, H

Centre back length at size
12R = 55.5cm



Slim fit

2 button

Plain back

Cutaway front



CALVI - Slim Fit
2252 A, C, D, G, H

LIGHTWEIGHT FABRIC, HEAVY-HITTING STYLE

Take pride in your uniform with Europe's
best-selling corporate tailoring collection.



High Level
of Stretch



Lightweight
Fabric



High Level of
Stain Resistance

OPERA JACKET

CLASSIC FIT

A. Navy

2 button, 2 flap pockets, centre vent.

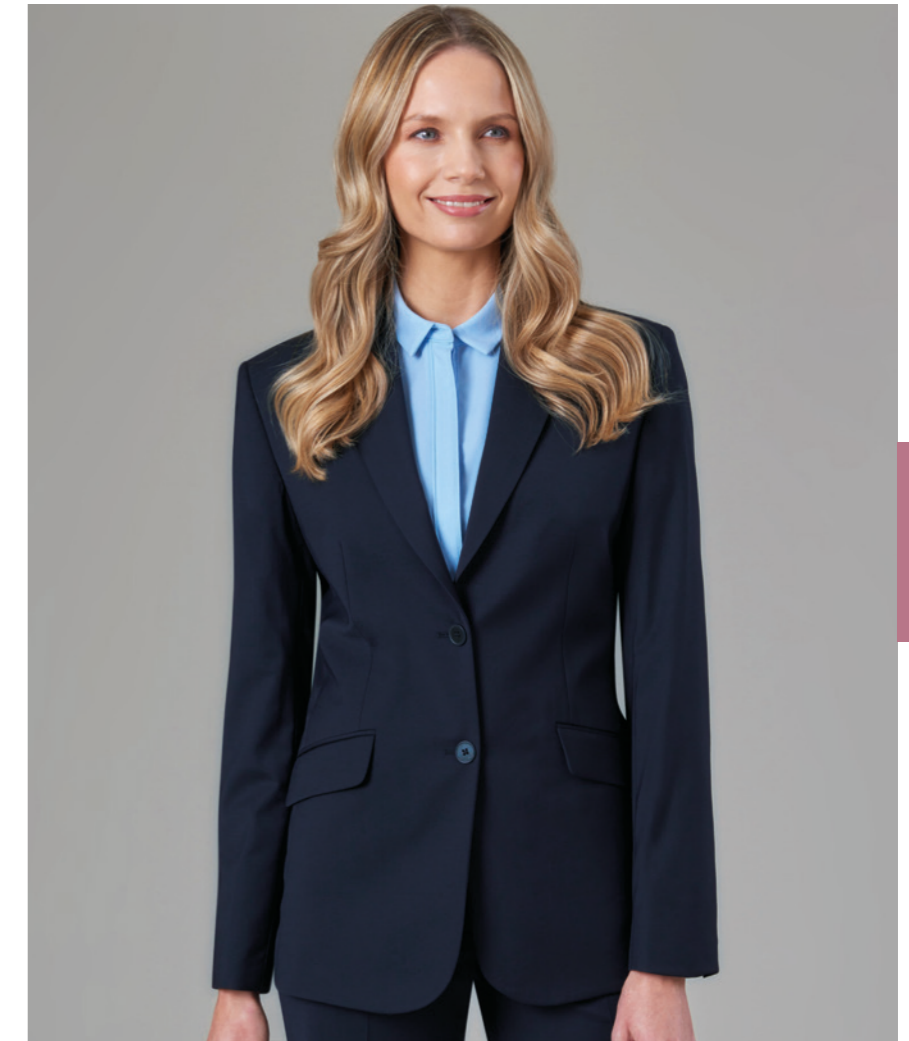
Sizes:
6 - 16 short
6 - 24 regular
10 - 24 long

Code & Colours:
2250 A, C, D

Centre back length at size
12R = 65.5cm



OPERA - Classic Fit
2250 A, C, D



SCAPOLI WAISTCOAT

TAILORED FIT

G. Light Grey

4 button front, cloth backed,
2 welt pockets.

Sizes:
6 - 24 long

Code & Colours:
2200 A, C, D, F, G, H

Centre back length at size
12L = 51cm



SCAPOLI - Tailored Fit
2200 A, C, D, F, G, H

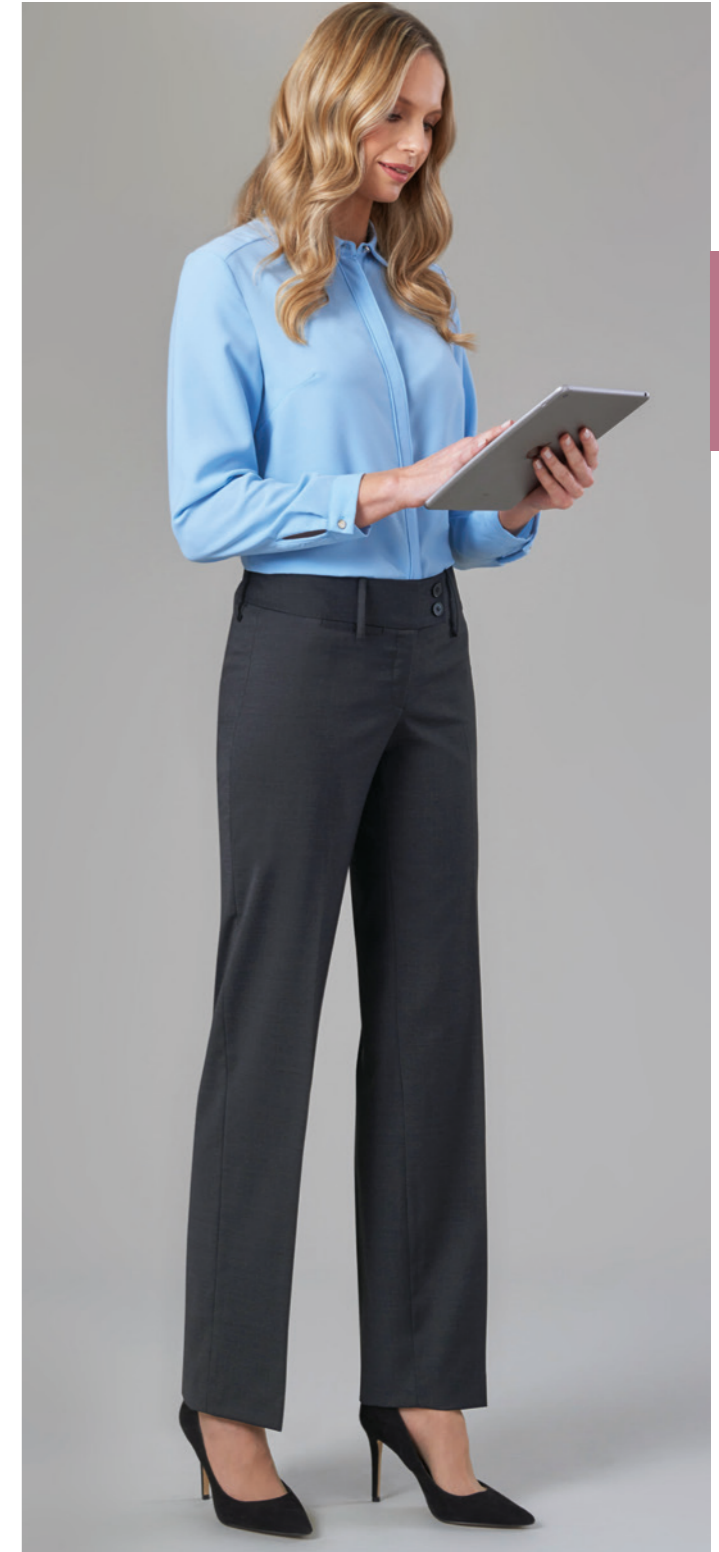


SLIM, TAILORED, STRAIGHT & PARALLEL LEG TROUSERS





High Level of Stretch | Lightweight Fabric | High Level of Stain Resistance



SOPHISTICATED

TORINO TROUSER

SLIM LEG
 D. Black
 Mid-waisted, 2 side pockets, mock rear pockets.
Sizes:
 4 - 24 waist in leg lengths
 S-27", R-29", L-31", XL-33" & 36" unfinished
Code & Colours:
 2294 A, C, D, G, H
 Half hem width at size 12R = 16cm

GENOA TROUSER

TAILORED LEG
 G. Light Grey
 Mid-waisted, 2 side pockets, mock rear pockets.
Sizes:
 4 - 24 waist in leg lengths
 S-27", R-29", L-31", XL-33" & 36" unfinished
Code & Colours:
 2234 A, C, D, F, G, H
 Size 4 available in solid colours only.
 Half hem width at size 12R = 21cm

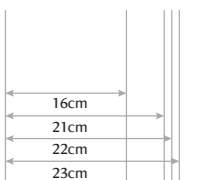
VARESE TROUSER

STRAIGHT LEG
 F. Charcoal Pinstripe
 High-waisted, Single button, front fastening, key card pocket.
Sizes:
 2 - 24 waist in leg lengths
 S-27", R-29", L-31", XL-33" & 36" unfinished
Code & Colours:
 2109 A, C, D, F
 Sizes 2 and 4 available in colour A only.
 Half hem width at size 12R = 22cm

MIRANDA TROUSER

PARALLEL LEG
 C. Charcoal
 Low-waisted, key card pocket, mock rear pockets.
Sizes:
 6 - 24 waist in leg lengths
 S-27", R-29", L-31", XL-33" & 36" unfinished
Code & Colours:
 2181 A, C, D, F, G
 Half hem width at size 12R = 23cm

4 Trousers hem widths



DRESS TO IMPRESS

Flattering fit, sharp style.



EMPOLI SKIRT
A-LINE, SIDE POCKETS
C. Charcoal

A-line skirt with centre back vent, slanted side pockets, twin buttons on waistband.

Sizes:
6 - 24 regular - 22"
8 - 18 long - 25"

Code & Colours:
2351 A, C, D, H



NUMANA SKIRT
STRAIGHT
H. Mid Blue

Straight skirt, centre vent, shaped back panels, full stretch lining.

Sizes:
2 - 24 regular - 22"
8 - 24 long - 25"
8 - 24 x-long - 27"

Code & Colours:
2224 A, C, D, F, G, H



TERAMO DRESS

G. Light Grey

Princess seam, short sleeve, centre vent, full stretch lining.

Sizes:
6 - 24 regular
8 - 20 long

Code & Colours:
2289 A, C, D, G, H

Centre back length at size
12R = 97cm

MARINO DRESS

A. Navy

Short sleeve, centre back vent, full stretch lining, waistline darts.

Sizes:
6 - 24 regular
8 - 20 long

Code & Colours:
2354 A, C, D, H

Centre back length at size
12R = 97cm



High Level of Stretch



Lightweight Fabric



High Level of Stain Resistance

SOPHISTICATED

FABRIC INFORMATION

Our SOPHISTICATED collection is available in up to 6 fabric colour choices.



A. Navy C. Charcoal D. Black F. Charcoal Pinstripe G. Light Grey H. Mid Blue



54% Polyester
44% Wool
2% Lycra



High Level
of Stretch



Machine
Washable



Lightweight
Fabric



Durable -
Martindale Test
> 60,000 rubs



High Level
of Stain
Resistance

SOPHISTICATED COLLECTION

GUARANTEES EXCEPTIONAL WEARABILITY IN MANY MARKET SECTORS, INCLUDING:



Management



Financial
& Banking



Travel



Hotels



Front of
house



Retail



Facilities
Management



Car
Dealerships

MEN'S SOPHISTICATED SUMMARY



CASSINO JACKET

SLIM FIT
H. Mid Blue

2 button jacket, side vents, slim lapels.

Sizes:
34" - 44" short
34" - 46" regular
34" - 44" long

Code & Colours:
5985 A, C, D, G, H

Centre back length at size 40R = 75cm



AVALINO JACKET

TAILORED FIT
G. Light Grey

2 button, side vents.

Sizes:
36" - 48" short
34" - 56" regular
34" - 48" long

Code & Colours:
5647 A, C, D, F, G, H

Sizes 34R to 56R available in solid colours only.
Other colours available in sizes 36R to 52R.
Sizes 34L and 36L available in colour A only.

Centre back length at size 40R = 77cm



IMOLA JACKET

CLASSIC FIT
C. Charcoal

3 button, centre vent.

Sizes:
36" - 48" short
36" - 56"* regular
38" - 48" long

Code & Colours:
5646 A, C, D

*Size 56R available in solid Navy only.

Centre back length at size 40R = 78cm



BUSSO WAISTCOAT

TAILORED FIT
A. Navy

Cloth backed, 2 welt pockets, 5 button front.

Sizes:
34" - 56"* regular

Code & Colours:
1074 A, C, D, F, G, H

Colour A, C and D available up to size 56R.
Size 34 available in solid colours only.

Centre back length at size 40R = 62cm



CASSINO TROUSER

SLIM FIT
H. Mid Blue

Flat front, 2 side pockets, 1 rear pocket.

Sizes:
28" - 40" waist in leg lengths
S-29.5", R-31.5", L-33" & 36" unfinished

Code & Colours:
8655 A, C, D, G, H

Half hem width at waist size 34" = 19cm



AVALINO TROUSER

TAILORED FIT
G. Light Grey

Flat front, 2 side pockets, 1 rear pocket.

Sizes:
24" - 52"* waist in leg lengths
S-29.5", R-31.5", L-33" & 36" unfinished

Code & Colours:
8387 A, C, D, F, G, H

Waist size 46" available in solid colours only.
Sizes 24" and 26" available in colour A only.
Sizes 48" to 52" available in colours G and H only.

Half hem width at waist size 34" = 21cm



IMOLA TROUSER

CLASSIC FIT
D. Black

Single pleat, 2 side pockets, 1 rear pocket.

Sizes:
28" - 52" waist in leg lengths
S-29.5", R-31.5", L-33" & 36" unfinished

Code & Colours:
8314 A, C, D

Waist sizes 50 -52 available in solid colours only.

Half hem width at waist size 34" = 22cm

WOMEN'S

SOPHISTICATED SUMMARY



ROSA JACKET
TAILORED FIT
A. Navy
Tailored fit, collarless styling with curved vents, 2 internal jett pockets, curved front/back seams.
Sizes:
6 - 16 short
6 - 24 regular
6 - 18 long
Code & Colours:
2353 A, C, D, H
Centre back length at size 12R = 50cm



EMPOLI SKIRT
A-LINE, SIDE POCKETS
A. Navy
A-line skirt with centre back vent, slanted side pockets, twin buttons on waistband.
Sizes:
6 - 24 regular - 22"
8 - 18 long - 25"
Code & Colours:
2351 A, C, D, H



TORINO TROUSER
SLIM LEG
D. Black
Mid-waisted, 2 side pockets, mock rear pockets.
Sizes:
4 - 24 waist in leg lengths
S-27", R-29", L-31", XL-33" & 36" unfinished
Code & Colours:
2294 A, C, D, G, H
Half hem width at size 12R = 16cm



VARESE TROUSER
STRAIGHT LEG
A. Navy
High-waisted, single button, front fastening, key card pocket.
Sizes:
2 - 24 waist in leg lengths
S-27", R-29", L-31", XL-33" & 36" unfinished
Code & Colours:
2109 A, C, D, F
Sizes 2 and 4 available in colour A only.
Half hem width at size 12R = 22cm



CALVI JACKET
SLIM FIT
C. Charcoal
2 button, cutaway front, plain back.
Sizes:
6 - 16 short
4 - 24 regular
6 - 18 long
Code & Colours:
2252 A, C, D, G, H
Centre back length at size 12R = 55.5cm



NUMANA SKIRT
STRAIGHT
H. Mid Blue
Straight skirt, centre vent, shaped back panels, full stretch lining.
Sizes:
2 - 24 regular - 22"
8 - 24 long - 25"
8 - 24 x-long - 27"
Code & Colours:
2224 A, C, D, F, G, H
Size 2R available in colour A only.
Size 4R available in solid colours only.



GENOA TROUSER
TAILORED LEG
H. Mid Blue
Mid-waisted, 2 side pockets, mock rear pockets.
Sizes:
4 - 24 waist in leg lengths
S-27", R-29", L-31", XL-33" & 36" unfinished
Code & Colours:
2234 A, C, D, F, G, H
Size 4 available in solid colours only.
Half hem width at size 12R = 21cm



MIRANDA TROUSER
PARALLEL LEG
G. Light Grey
Low-waisted, key card pocket, mock rear pockets.
Sizes:
6 - 24 waist in leg lengths
S-27", R-29", L-31", XL-33" & 36" unfinished
Code & Colours:
2181 A, C, D, F, G
Half hem width at size 12R = 23cm



NOVARA JACKET
TAILORED FIT
H. Mid Blue
2 button, contrast detailing, centre vent.
Sizes:
6 - 18 short
4 - 24 regular
8 - 18 long
Code & Colours:
2222 A, C, D, F, G, H
Size 4 regular available in solid colours only.
Size 18 petite available in solid colours only.
Centre back length at size 12R = 63cm



MARINO DRESS
C. Charcoal
Short sleeve, centre back vent, full stretch lining, waistline darts.
Sizes:
6 - 24 regular
8 - 20 long
Code & Colours:
2354 A, C, D, H
Centre back length at size 12R = 97cm



OPERA JACKET
CLASSIC FIT
C. Charcoal
2 button, 2 flap pockets, centre vent.
Sizes:
6 - 16 short
6 - 24 regular
10 - 24 long
Code & Colours:
2250 A, C, D
Centre back length at size 12R = 65.5cm



TERAMO DRESS
G. Light Grey
Princess seam, short sleeve, centre vent, full stretch lining.
Sizes:
6 - 24 regular
8 - 20 long
Code & Colours:
2289 A, C, D, G, H
Centre back length at size 12R = 97cm



SCAPOLI WAISTCOAT
TAILORED FIT
G. Light Grey
4 button front, cloth backed, 2 welt pockets.
Sizes:
6 - 24 long
Code & Colours:
2200 A, C, D, F, G, H
Centre back length at size 12L = 51cm

WASHCARE INSTRUCTIONS



Wool Cycle



Wash Separately



Reshape garments naturally



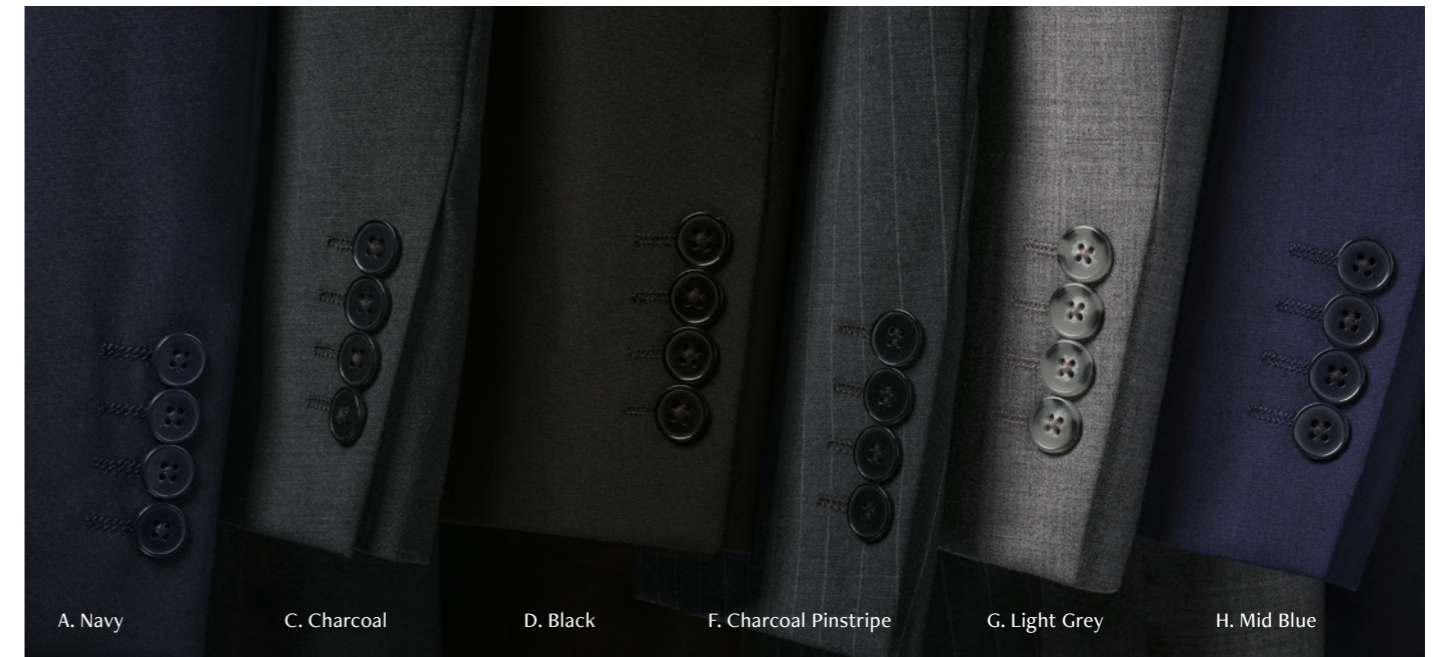
Do NOT tumble dry



Cool iron over damp cloth



Alternatively, garments can be dry cleaned



A. Navy

C. Charcoal

D. Black

F. Charcoal Pinstripe

G. Light Grey

H. Mid Blue

BROOK TAVERNER

SINCE 1912



SOPHISTICATED COLLECTION

www.brooktaverner.com

