

# BROOK TAVERNER

---

SINCE 1912



**PERFORMANCE**  
COLLECTION

**CORPORATE CLOTHING 2023/24**

**BROOK  
TAVERNER**

SINCE 1912



## PERFORMANCE COLLECTION

### ALL-ROUNDER

In corporate wear, style, fit and comfort are so often compromised in favour of durable fabrics. Our Performance Collection perfectly balances high quality tailoring with cutting edge technology. A wide range of fits and styles has created a go-to all round performer offering unrivalled value.



# BROOK TAVERNER

SINCE 1912

## PERFORMANCE / MEN'S

### JACKETS

HOLBECK Slim Fit Jacket	106
ALDWYCH Tailored Fit Jacket	107
LANGHAM Classic Fit Jacket	107

### TROUSERS

HOLBECK Slim Fit Trousers	109
ALDWYCH Tailored Fit Trousers	108
LANGHAM Classic Fit Trousers	109

### WAISTCOAT

CAPITAL Tailored Fit Waistcoat	110
--------------------------------	-----

### PERFORMANCE FLEXIBLE LOOKS

Options for wearability	111
-------------------------	-----

## PERFORMANCE / WOMEN'S

### JACKETS

EDITION Tailored Fit Jacket	112
ROSEWOOD Slim Fit Jacket	113
RITZ Tailored Fit Jacket	114
CONNAUGHT Classic Fit Jacket	115

### TROUSERS

ASTORIA Tailored Leg Trousers	117
HEMPEL Slim Leg Trousers	116
GROSVENOR Straight Leg Trousers	117

### WAISTCOAT, SKIRTS & DRESS

WALDORF Tailored Fit Waistcoat	115
MERCHANT Skirt	118
WYNDHAM Skirt	118
CORINTHIA Dress	119

### COLLECTION SUMMARY

#### COLOUR CHOICE & AFTERCARE

Performance Collection & Fabric Information	120 - 123
---	-----------

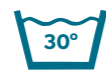
## 18 MIX & MATCH STYLES / SLIM, TAILORED & CLASSIC FITS / UP TO 4 COLOURS



64% Recycled Polyester  
34% Wool  
2% Lycra



High Level of Stretch



Machine Washable



Midweight Fabric



Durable - Martindale Test  
> 80,000 rubs



High Level of Crease Resistance



## PARTICULARLY SUITABLE FOR:



Financial & Banking



Travel



Office teams



Hotels



Front of house



Retail



Health sectors



Facilities Management



Security



Car Dealerships



Warehouse & Distribution



A. Navy

C. Charcoal

D. Black

G. Mid Grey

PERFORMANCE



### HOLBECK JACKET

SLIM FIT  
A. Navy

Sizes:  
34" - 44" short  
34" - 46" regular  
34" - 44" long

Code & Colours:  
3500 A, C, D, G

Centre back length at size  
40R = 75cm

Slim lapels with  
saddle stitch detail

45 Recycled bottles  
used per suit

Slim fit

2 button

High level of  
stretch

Side vents

45 Recycled bottles  
used per suit

12%  
STRETCH  
High Level  
of Stretch

High Level of  
Crease Resistance

## SUSTAINABILITY & PERFORMANCE – A COMMON THREAD

Benefitting from recycled polyester in the fabric blend, each suit from the Performance Collection uses 45 post-consumer bottles. Make the smarter choice.



### ALDWYCH JACKET

TAILORED FIT  
D. Black

2 button, side vents.

Sizes:  
36" - 48" short  
36" - 56" regular  
38" - 48" long

Code & Colours:  
3125 A, C, D, G

Centre back length at size  
40R = 77cm



### LANGHAM JACKET

CLASSIC FIT  
C. Charcoal

3 button, centre vent.

Sizes:  
36" - 48" short  
36" - 60" regular  
38" - 48" long

Code & Colours:  
5984 A, C, D

Centre back length at size  
40R = 78cm



HOLBECK - Slim Fit  
3500 A, C, D, G



ALDWYCH - Tailored Fit  
3125 A, C, D, G



LANGHAM - Classic Fit  
5984 A, C, D

**ALDWYCH**  
TAILORED FIT TROUSER



**ALDWYCH TROUSER**  
TAILORED FIT  
D. Black

Sizes:  
28" - 48\*\* waist in leg lengths  
S-29.5", R-31.5", L-33" & 36" unfinished

Code & Colours:  
8557 A, C, D, G

\*Sizes 46" and 48" available in colour G only.

Half hem width at waist size  
34" = 21cm

2 side pockets

1 rear pocket

Flat front

Tailored fit

Midweight fabric

Available in 3 leg lengths  
and unfinished

**SLIM, TAILORED &  
CLASSIC FIT TROUSERS**



**HOLBECK TROUSER**  
SLIM FIT  
A. Navy

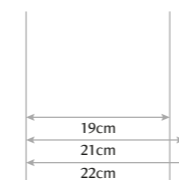
Flat front, 2 side pockets, 1 rear pocket.

Sizes:  
28" - 40" waist in leg lengths  
S-29.5", R-31.5", L-33" & 36" unfinished

Code & Colours:  
8733 A, C, D, G

Half hem width at waist size  
34" = 19cm

3 Trousers hem widths



**LANGHAM TROUSER**  
CLASSIC FIT  
C. Charcoal

Single pleat, 2 side pockets, 1 rear pocket.

Sizes:  
28" - 56" waist in leg lengths  
S-29.5", R-31.5", L-33" & 36" unfinished

Code & Colours:  
8525 A, C, D

Half hem width at waist size  
34" = 22cm

45 Recycled bottles used per suit

12% Stretch  
High Level of Stretch

High Level of Crease Resistance

PERFORMANCE

# DELIVERING THE SERVICE YOU DESERVE ALL DAY, EVERY DAY

## CAPITAL WAISTCOAT TAILORED FIT

Sizes:  
34" - 54" regular  
Code & Colours:  
1300 A, C, D, G  
Centre back length at size  
40R = 62cm



Lining backed with adjuster

Tailored fit

5 button

2 welt pockets



CAPITAL - Tailored Fit  
1300 A, C, D, G



# PERFORMANCE

## TAILORED TO PERFORM TOGETHER

Designed to encourage individuality, our versatile range of corporate fashion delivers the freedom of choice when creating the perfect uniform.

Our tailored lines look sharp worn as full suits and can be paired with styles from our Casuals & Separates for a more relaxed feel. Shirts & Blouses add a further layer of flexibility with a host of complementary options that can take a uniform in any direction.

With endless amounts of mix & match opportunities, the choice really is yours!



PERFORMANCE

### CREATE UNIFORM LOOKS FOR A VARIETY OF MARKET SECTORS INCLUDING:



# EDITION

## TAILORED FIT JACKET

### EDITION JACKET

#### TAILORED FIT

C. Charcoal

Sizes:  
6 - 16 short  
6 - 24 regular  
8 - 18 long

Code & Colours:  
2355 A, C, D

Centre back length at size  
12R = 60.5cm

Collar and  
notch lapel

45 Recycled bottles  
used per suit

High level  
of stretch

Tailored fit

2 patch  
pockets

1 internal  
jett pocket

**STAND-OUT PERFORMANCE  
IN EVERY STITCH**



45 Recycled bottles  
used per suit

12%  
STRETCH

High Level  
of Stretch

High Level of  
Crease Resistance

### ROSEWOOD JACKET

SLIM FIT

A. Navy

1 button, peaked lapel, 2 flap  
and 2 jett pockets, plain back.

Sizes:  
6 - 16 short  
4 - 24 regular  
6 - 18 long

Code & Colours:  
2263 A, C, D, G

Centre back length at size  
12R = 55.5cm

PERFORMANCE



EDITION - Tailored Fit  
2355 A, C, D



ROSEWOOD - Slim Fit  
2263 A, C, D, G

**RITZ JACKET**  
TAILORED FIT  
D. Black

Sizes:  
6 - 16 short  
6 - 24 regular  
8 - 18 long

Code & Colours:  
2227 A, C, D, G

Centre back length at size  
12R = 58cm

Peak lapels

High level  
of stretch

Tailored fit

3 button

Centre vent



45 Recycled bottles  
used per suit



High Level  
of Stretch



High Level of  
Crease Resistance



**CONNAUGHT JACKET**  
CLASSIC FIT  
G. Mid Grey

2 button, notch lapel, 1 inside pocket, centre vent.

Sizes:  
6 - 18 short  
6 - 30\* regular  
8 - 24 long

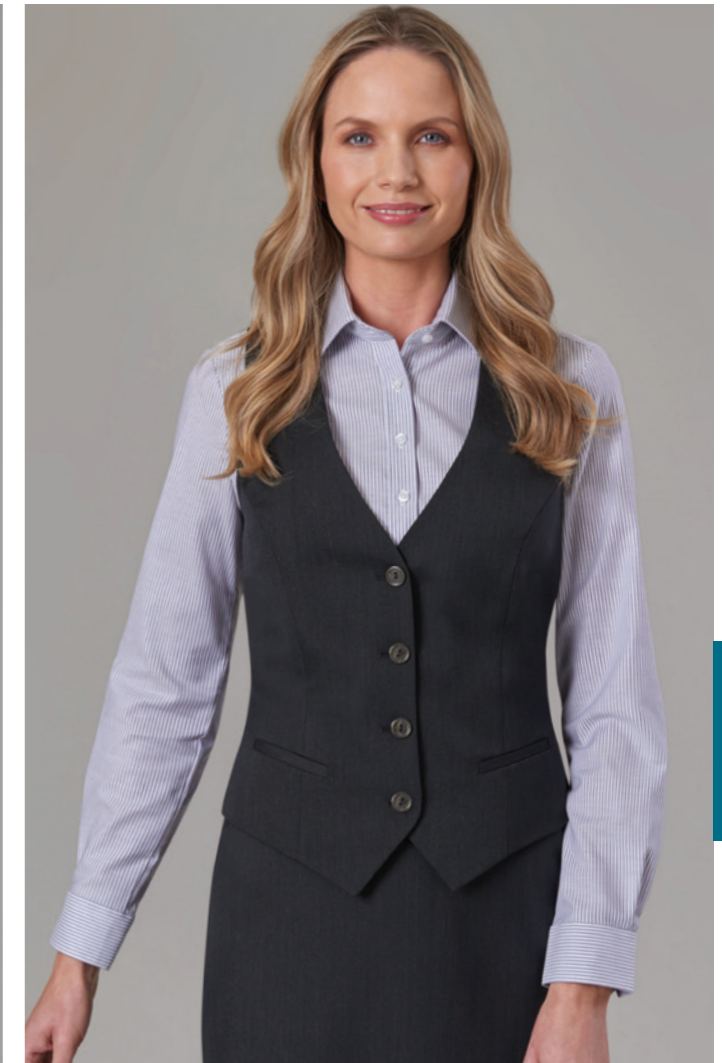
Code & Colours:  
2226 A, C, D, G

\*Mid Grey available to 24R only.

Centre back length at size  
12R = 65.5cm



RITZ - Tailored Fit  
2227 A, C, D, G



**WALDORF WAISTCOAT**  
TAILORED FIT  
C. Charcoal

4 button front, lining backed with adjuster,  
2 welt pockets.

Sizes:  
6 - 24 long

Code & Colours:  
2260 A, C, D, G

Centre back length at size  
12R = 51cm



CONNAUGHT - Classic Fit  
2226 A, C, D, G



WALDORF - Tailored Fit  
2260 A, C, D, G



# HEMPEL

## SLIM LEG TROUSER

45 Recycled bottles used per suit

12% STRETCH  
High Level of Stretch

High Level of Crease Resistance

### HEMPEL TROUSER

SLIM LEG  
D. Black

Sizes:  
4 - 24 waist in leg lengths  
S-27", R-29", L-31", XL-33" & 36" unfinished

Code & Colours:  
2306 A, C, D, G

Half hem width at size  
12R = 16cm

Mid-waisted, belt loops & front hook fastening

2 side pockets

Mock hip pockets

Slim leg

Midweight fabric

Available in 4 leg lengths and unfinished



STAND-OUT  
PERFORMANCE  
IN EVERY  
STITCH

# SLIM, TAILORED, & STRAIGHT LEG TROUSERS



### ASTORIA TROUSER

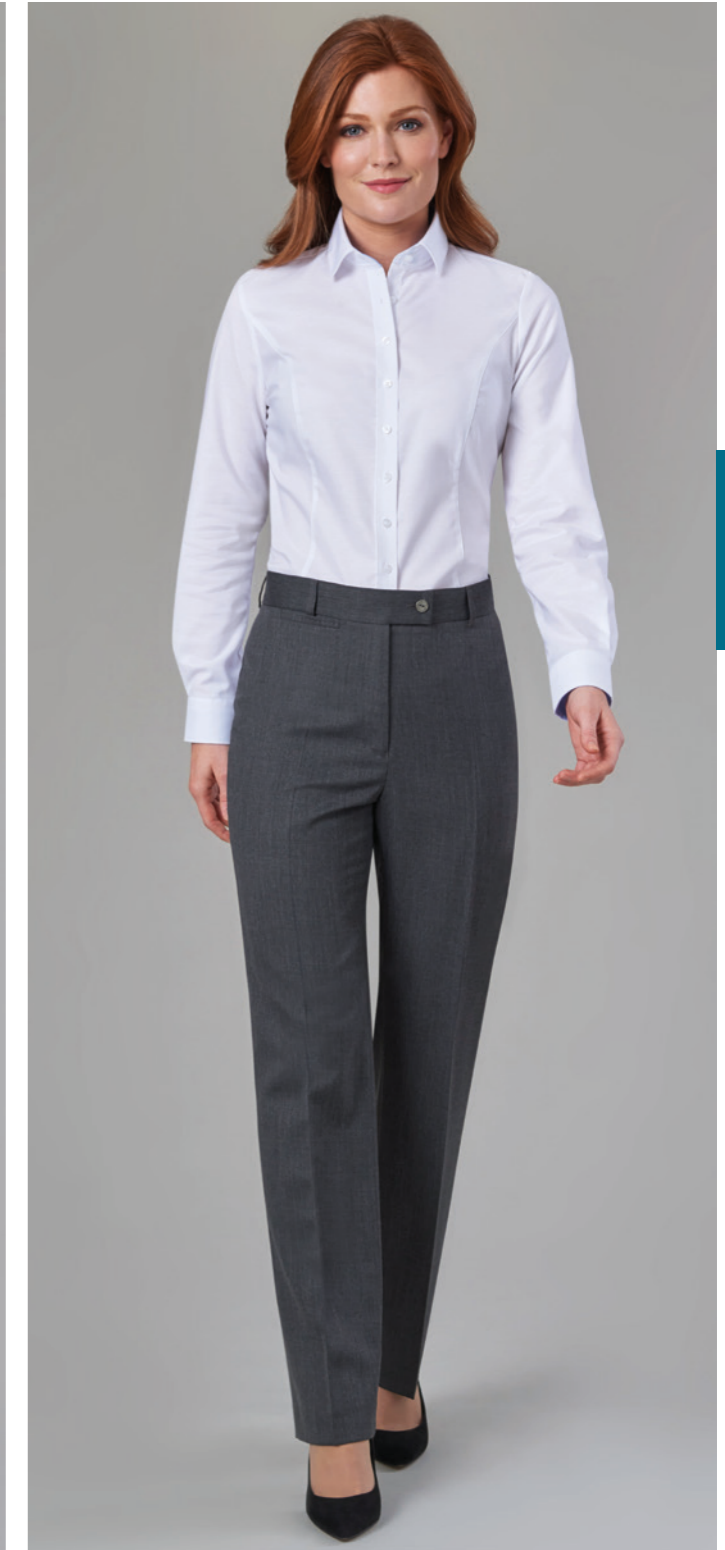
TAILORED LEG  
C. Charcoal

Mid-waisted, front hook fastening, 2 side pockets, mock rear pockets, half lined belt loops.

Sizes:  
4 - 24 waist in leg lengths  
S-27", R-29", L-31", XL-33" & 36" unfinished

Code & Colours:  
2262 A, C, D, G

Half hem width at size 12R = 21cm



### GROSVENOR TROUSER

STRAIGHT LEG  
G. Mid Grey

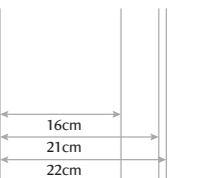
High-waisted, single button front fastening, key card pocket, half lined, belt loops.

Sizes:  
6 - 30 waist in leg lengths  
S-27", R-29", L-31", XL-33" & 36" unfinished

Code & Colours:  
2231 A, C, D, G

Mid Grey available to 24 only.  
Half hem width at size 12R = 22cm

3 Trousers hem widths



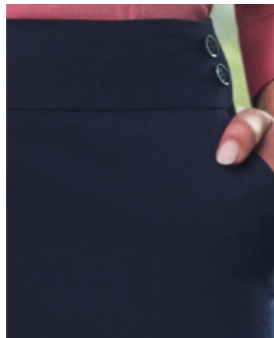


**MERCHANT SKIRT**  
A-LINE, SIDE POCKETS  
D. Black

A-line skirt with centre back vent, slanted side pockets, twin buttons on waistband.

**Sizes:**  
6 - 24 regular - 22"  
8 - 18 long - 25"

**Code & Colours:**  
2352 A, C, D



**WYNDHAM SKIRT**  
STRAIGHT  
C. Charcoal

Straight skirt, centre vent, shaped back panels, full stretch lining.

**Sizes:**  
4 - 24 regular - 22"  
8 - 30 long - 25"  
8 - 24 x-long - 27"

**Code & Colours:**  
2229 A, C, D, G



**CORINTHIA DRESS**  
A. Navy


V-neck, short sleeve, breast darts, centre vent, full stretch lining.

**Sizes:**  
6 - 24 regular  
8 - 20 long


**Code & Colours:**  
2246 A, C, D, G

Centre back length at size  
12R = 97cm


PERFORMANCE



45 Recycled bottles used per suit



High Level of Stretch



High Level of Crease Resistance

**LOOK GOOD, FEEL BETTER**

Recycled polyester, high-stretch Lycra and renewable wool are beautifully fused together to create a smart, comfy collection you can rely on, day in, day out.

# FABRIC INFORMATION

Our PERFORMANCE collection is available in up to 4 fabric colour choices.



- 64% Recycled Polyester, 34% Wool, 2% Lycra
- 12% STRETCH High Level of Stretch
- 30° Machine Washable
- 325g/m Midweight Fabric
- Durable - Martindale Test > 80,000 rubs
- High Level of Crease Resistance

**45** Recycled bottles used per suit

## PERFORMANCE COLLECTION GUARANTEES EXCEPTIONAL WEARABILITY IN MANY MARKET SECTORS, INCLUDING:



# MEN'S PERFORMANCE SUMMARY



**HOLBECK JACKET**  
SLIM FIT  
A. Navy  
2 button jacket, side vents, slim lapels with saddle stitching.  
**Sizes:**  
34" - 44" short  
34" - 46" regular  
34" - 44" long  
**Code & Colours:**  
3500 A, C, D, G  
Centre back length at size 40R = 75cm



**HOLBECK TROUSER**  
SLIM FIT  
A. Navy  
Flat front, 2 side pockets, 1 rear pocket.  
**Sizes:**  
28" - 40" waist in leg lengths  
S-29.5", R-31.5", L-33" & 36" unfinished  
**Code & Colours:**  
8733 A, C, D, G  
Half hem width at waist size 34" = 19cm



**ALDWYCH JACKET**  
TAILORED FIT  
G. Mid Grey  
2 button, side vents.  
**Sizes:**  
36" - 48" short  
36" - 56" regular  
38" - 48" long  
**Code & Colours:**  
3125 A, C, D, G  
Centre back length at size 40R = 77cm



**ALDWYCH TROUSER**  
TAILORED FIT  
G. Mid Grey  
Flat front, 2 side pockets, 1 rear pocket.  
**Sizes:**  
28" - 48" waist in leg lengths  
S-29.5", R-31.5", L-33" & 36" unfinished  
**Code & Colours:**  
8557 A, C, D, G  
\*Sizes 46" and 48" available in colour G only.  
Half hem width at waist size 34" = 21cm



**LANGHAM JACKET**  
CLASSIC FIT  
C. Charcoal  
3 button, centre vent.  
**Sizes:**  
36" - 48" short  
36" - 60" regular  
38" - 48" long  
**Code & Colours:**  
5984 A, C, D  
Centre back length at size 40R = 78cm



**LANGHAM TROUSER**  
CLASSIC FIT  
A. Navy  
Single pleat, 2 side pockets, 1 rear pocket.  
**Sizes:**  
28" - 56" waist in leg lengths  
S-29.5", R-31.5", L-33" & 36" unfinished  
**Code & Colours:**  
8525 A, C, D  
Half hem width at waist size 34" = 22cm



**CAPITAL WAISTCOAT**  
TAILORED FIT  
D. Black  
5 button front, lining backed with adjuster, 2 welt pockets.  
**Sizes:**  
34" - 54" regular  
**Code & Colours:**  
1300 A, C, D, G  
Centre back length at size 40R = 62cm

PERFORMANCE

# WOMEN'S

## PERFORMANCE SUMMARY



**ROSEWOOD JACKET**  
SLIM FIT  
D. Black  
1 button, peaked lapel, 2 flap and 2 jetted pockets, plain back.  
**Sizes:**  
6 - 16 short  
4 - 24 regular  
6 - 18 long  
**Code & Colours:**  
2263 A, C, D, G  
Centre back length at size  
12R = 55.5cm



**EDITION JACKET**  
TAILORED FIT  
A. Navy  
Tailored fit, collar and notch lapel, 2 patch pockets, 1 jett pocket.  
**Sizes:**  
6 - 16 short  
6 - 24 regular  
8 - 18 long  
**Code & Colours:**  
2355 A, C, D  
Centre back length at size  
12R = 60.5cm



**HEMPEL TROUSER**  
SLIM LEG  
A. Navy  
Mid-waisted, side pockets, mock hip pockets.  
**Sizes:**  
4 - 24 waist in leg lengths  
S-27", R-29", L-31", XL-33" & 36" unfinished  
**Code & Colours:**  
2306 A, C, D, G  
Half hem width at size  
12R = 16cm



**ASTORIA TROUSER**  
TAILORED LEG  
G. Mid Grey  
Mid-waisted, front hook fastening, 2 side pockets, mock rear pockets, half lined.  
**Sizes:**  
4 - 24 waist in leg lengths  
S-27", R-29", L-31", XL-33" & 36" unfinished  
**Code & Colours:**  
2262 A,C, D, G  
Half hem width at size  
12R = 21cm



**RITZ JACKET**  
TAILORED FIT  
A. Navy  
3 button, peaked lapels, centre vent.  
**Sizes:**  
6 - 16 short  
6 - 24 regular  
8 - 18 long  
**Code & Colours:**  
2227 A, C, D, G  
Centre back length at size  
12R = 58cm



**CONNAUGHT JACKET**  
CLASSIC FIT  
G. Mid Grey  
2 button, notch lapel, 1 inside pocket, centre vent.  
**Sizes:**  
6 - 18 short  
6 - 30\* regular  
8 - 24 long  
**Code & Colours:**  
2226 A, C, D, G  
\*Mid Grey available to 24R only.  
Centre back length at size  
12R = 65.5cm



**GROSVENOR TROUSER**  
STRAIGHT LEG  
A. Navy  
High-waisted, single button front fastening, key card pocket, half lined, belt loops.  
**Sizes:**  
6 - 30 waist in leg lengths  
S-27", R-29", L-31", XL-33" & 36" unfinished  
**Code & Colours:**  
2231 A, C, D, G  
Mid Grey available to 24 only.  
Half hem width at size  
12R = 22cm



**WALDORF WAISTCOAT**  
C. Charcoal  
4 button front, lining backed with adjuster, 2 welt pockets.  
**Sizes:**  
6 - 24 long  
**Code & Colours:**  
2260 A, C, D, G  
Centre back length at size  
12R = 51cm



**CORINTHIA DRESS**  
G. Mid Grey  
V-neck, short sleeve, breast darts, centre vent, full stretch lining.  
**Sizes:**  
6 - 24 regular  
8 - 20 long  
**Code & Colours:**  
2246 A, C, D, G  
Centre back length at size  
12R = 97cm

### WASHCARE INSTRUCTIONS



Wool Cycle



Wash Separately



Reshape garments naturally



Do NOT tumble dry



Cool iron over damp cloth



Alternatively, garments can be dry cleaned



**MERCHANT SKIRT**  
A-LINE, SIDE POCKETS  
C. Charcoal  
A-line skirt with centre back vent, slanted side pockets, twin buttons on waistband.  
**Sizes:**  
6 - 24 regular - 22"  
8 - 18 long - 25"  
**Code & Colours:**  
2352 A, C, D



**WYNDHAM SKIRT**  
STRAIGHT  
A. Navy  
Straight skirt, centre vent, shaped back panels, full stretch lining.  
**Sizes:**  
4 - 24 regular - 22"  
8 - 30 long - 25"  
8 - 24 x-long - 27"  
**Code & Colours:**  
2229 A, C, D, G  
Mid Grey available to 24L only.



A. Navy

C. Charcoal

D. Black

G. Mid Grey

# BROOK TAVERNER

---

SINCE 1912



## PERFORMANCE COLLECTION

[www.brooktaverner.com](http://www.brooktaverner.com)

