

# BROOK TAVERNER

SINCE 1912

## CASUALS & SEPARATES JERSEY STRETCH

### BELINDA DRESS - 2380



#### DESCRIPTION

Short sleeve, fit and flare, 2 bust darts, waist seam detail, unlined, concealed zip.



**COMMODITY CODE:** 62044300000

#### FABRIC SPECIFICATION

**Composition:**

67% Viscose, 29% Polyamide, 4% Elastane

**Weight:** 360glm / Midweight

**Stretch:** Very high level of stretch

#### SIZES

6 - 24 regular

Centre back length at size 12R = 100.5cm

#### COLOURS

Available in 2 fabric colours:

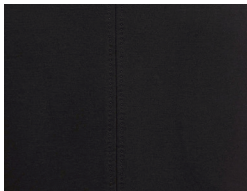
A - Navy

D - Black

A.



D.



#### WASHCARE INSTRUCTIONS



Machine Washable



Wash Separately



Reshape garments naturally



Do NOT tumble dry



Cool iron over damp cloth



Do NOT dry clean



STANDARD 100

#### GARMENT MEASURED FLAT & FASTENED (CM)

Size	6	8	10	12	14	16	18	20	22	24
1/2 Bust	40.5	43	45.5	48	50.5	53	55.5	58	60.5	63
Sleeve Length (Crown to Cuff)	19.5	20	20.5	21	21.5	22	22.5	23	23.5	24
Centre Back Length	99	99.5	100	100.5	101	101.5	102	102.5	103	103.5

Working, together.

www.brooktaverner.com